



**£850 PCM**

This modern town house situated on the popular Cote Farm Development is available on a long term lease if required. The accommodation comprises briefly: Entrance lobby, Lounge, Kitchen, Two Bedrooms and Bathroom. Gardens front & rear.

Situated on the popular Cote Farm development. Providing easy access to Shipley, Bradford and Leeds.

Ask us about....

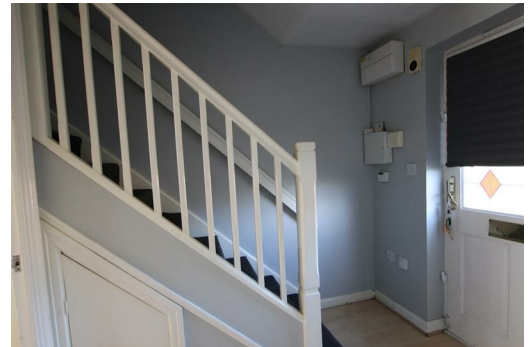
AUCTION

CONVEYANCING

MORTGAGES

SURVEYS





These particulars do not form part of any contract and no statements are made without any responsibility on the part of their clients. Applicants must investigate for themselves that statements are correct and no agent whether the partner or employee has the authority to make any representation or warranty whatsoever in respect of this property.

**IMPORTANT NOTICE: WHILST WE ENDEAVOUR TO MAKE OUR SALES DETAILS ACCURATE AND RELIABLE, THEY SHOULD NOT BE RELIED ON AS STATEMENTS OR REPRESENTATIONS OF FACT AND DO NOT IN ANY WAY CONSTITUTE A CONTRACT.**

PROSPECTIVE PURCHASERS SHOULD SATISFY THEMSELVES THAT DIMENSIONS ARE CORRECT AND THAT MAINS SERVICES ARE OPERATIONAL.

Energy Efficiency Rating			Environmental Impact (CO <sub>2</sub> ) Rating		
	Current	Potential		Current	Potential
Very energy efficient - lower running costs			Very environmentally friendly - lower CO <sub>2</sub> emissions		
(92 plus) <b>A</b>			(92 plus) <b>A</b>		
(81-91) <b>B</b>			(81-91) <b>B</b>		
(69-80) <b>C</b>			(69-80) <b>C</b>		
(55-68) <b>D</b>			(55-68) <b>D</b>		
(39-54) <b>E</b>			(39-54) <b>E</b>		
(21-38) <b>F</b>			(21-38) <b>F</b>		
(1-20) <b>G</b>			(1-20) <b>G</b>		
Not energy efficient - higher running costs			Not environmentally friendly - higher CO <sub>2</sub> emissions		
<b>England &amp; Wales</b>	EU Directive 2002/91/EC		<b>England &amp; Wales</b>	EU Directive 2002/91/EC	